



... the adventure begins

ASTRO SAGA – the adventure begins ...



Above: Balbur, Swampmoonian space-junk dealer

Three mysterious octahedrons are discovered deep in an asteroid. These objects are the only keys that will open 23.000 years of history.

A group of scientists use them to open a tunnel into the past. Grim Baata warriors materialize from it led by the power hungry Nork.

Thus begins a heroic, dramatic quest through space to find the legendary savior Rahon and save humanity. Space agent Gider, Siris, the boy Jupiter and the Swampmoonian space-junk dealer Balbur join forces to combat the ultimate evil.

Will the past forever dominate our future?

Right: Balbur finds Jupiter



Below: The race against time and enemies



ASTRO SAGA – the adventure begins ...



Above: Ceremony of Doom

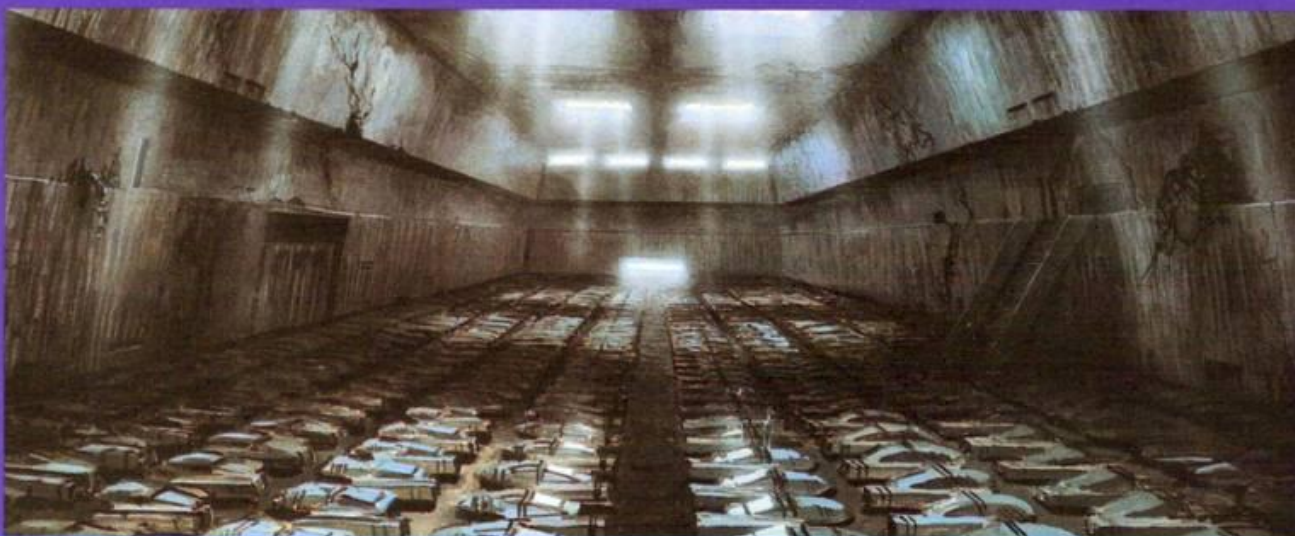
Below: Balbur's Home





Above: Concor-City

Below: At the threshold of the ultimate battle



ASTRO SAGA — a dream comes true ...

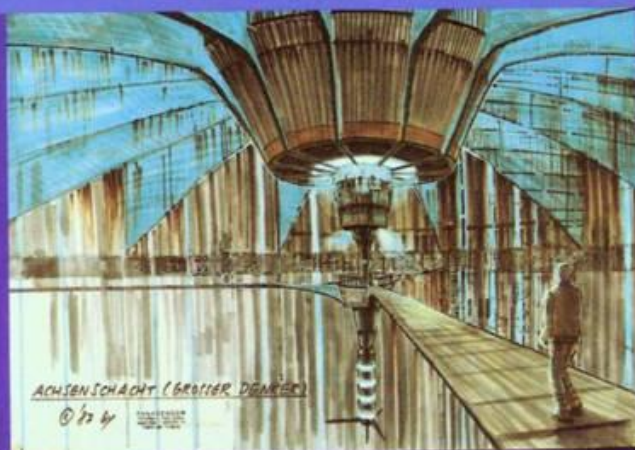


a dream comes true ...



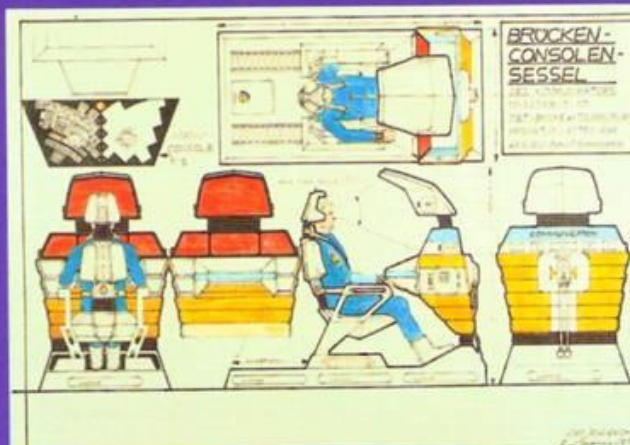
Bernd P. Kammermeier is more than just the director of ASTRO SAGA: He is also its creator. Kammermeier grew up in an artistic family that supported his lively imagination and creativity as a youth.

He made his first animated film at eight years of age. At eleven, he experienced Stanley Kubrick's 2001 — A SPACE ODYSSEY the way the director intended it, in 70 mm and six-channel stereo soundtrack.

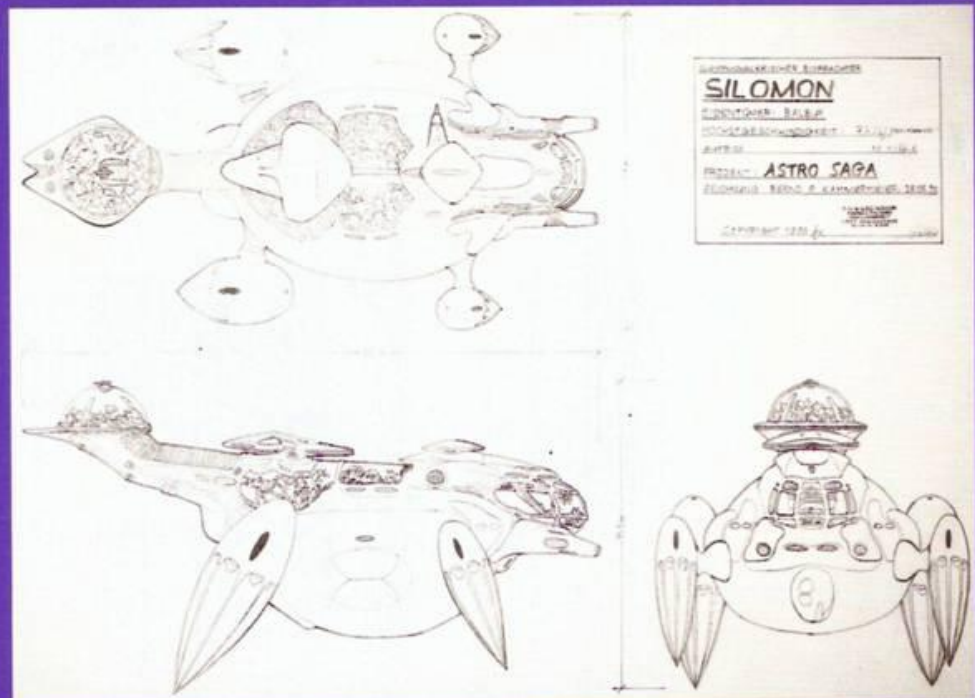
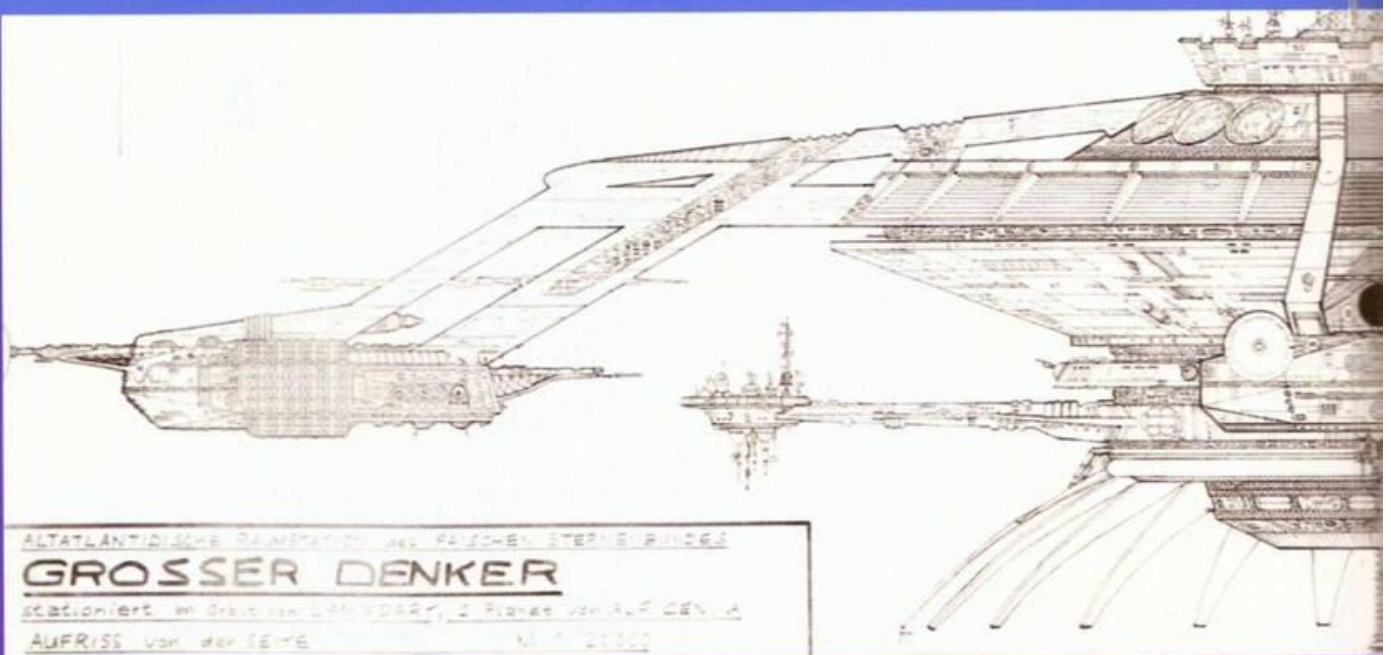


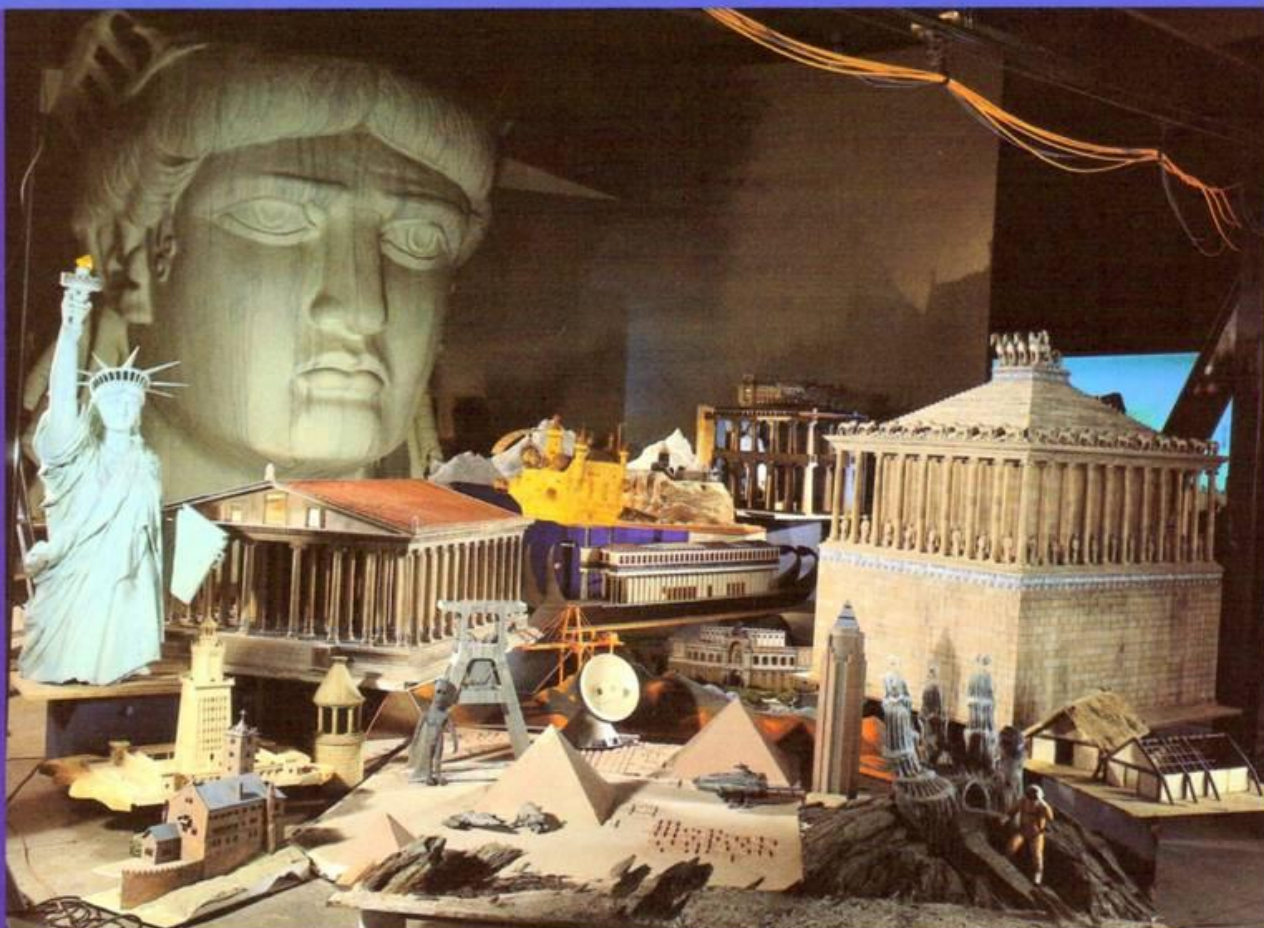
Everything in Kammermeier's life seems to have prepared him for the filming of his tremendous space epic ASTRO SAGA.

This monumental sci-fi adventure has been incubating in his mind since he began his film studies. At the time, he wrote hundreds of production sketches and the first storyboard. The project has been expanded to its current level on an international scale and will be realized with domestic and international talent.



ASTRO SAGA – a dream comes true ...





Panasensor is located in a small industrial town outside Frankfurt. Entering the studio is like stepping into another time-space continuum. At times, the model shop takes you into the past, at others, it transports you to new and distant planets. Galactic space stations, full-size X-wing fighters and Apollo 13 capsules were built here.

Panasensor takes pride in precision and attention to detail, which is setting new standards in the special effects industry. The models are filmed in the company's own studio using a specially developed motion-control camera which was invented for ASTRO SAGA by Bernd P. Kammermeier. This photographic principle and its high precision, creates atmospheric images central to the emotional style of ASTRO SAGA.

ASTRO SAGA – a dream comes true ...

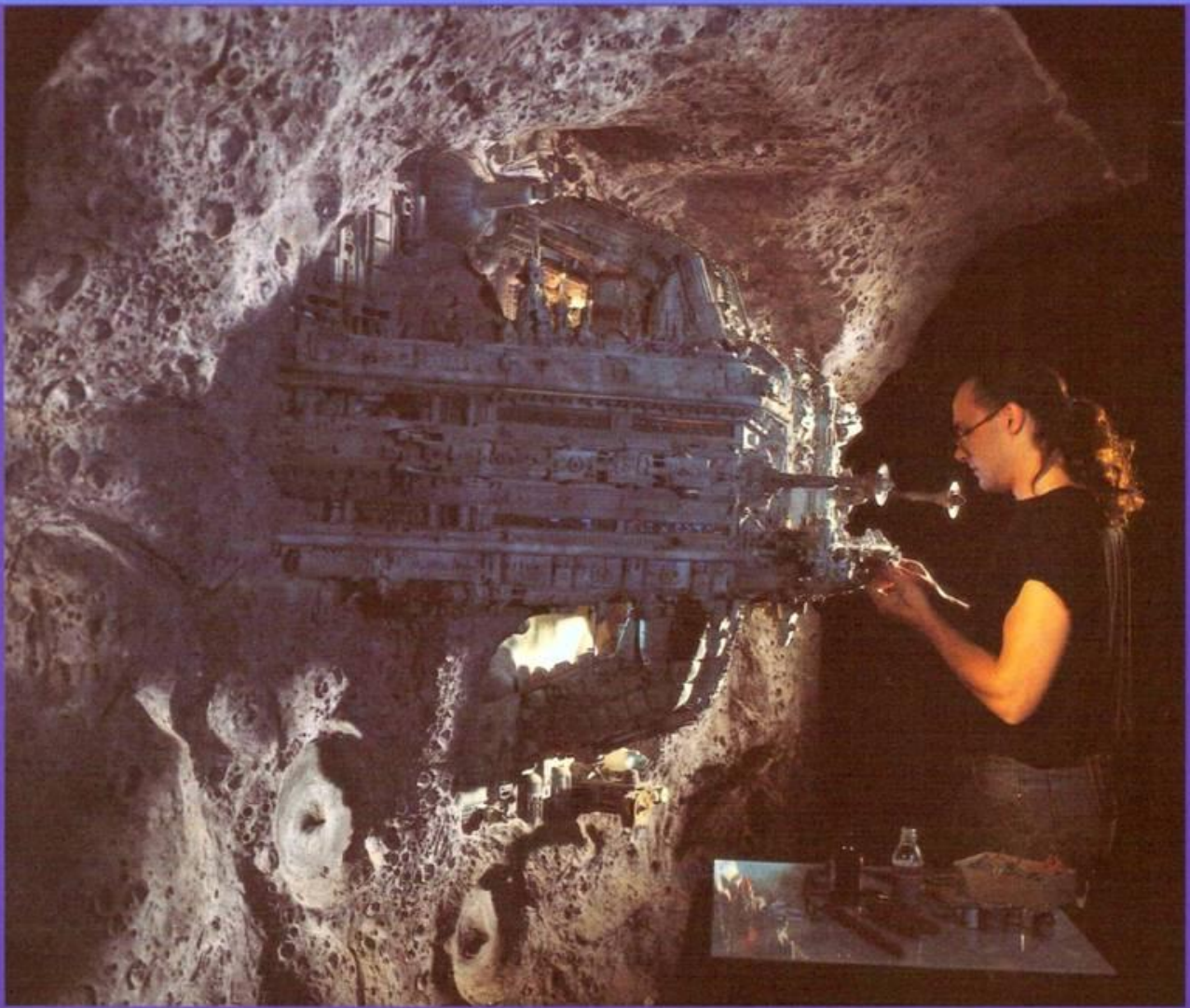


Left: Construction work on the battleship REVONNA

Right: Hangar port of a battle asteroid

Below: An armada for ASTRO SAGA

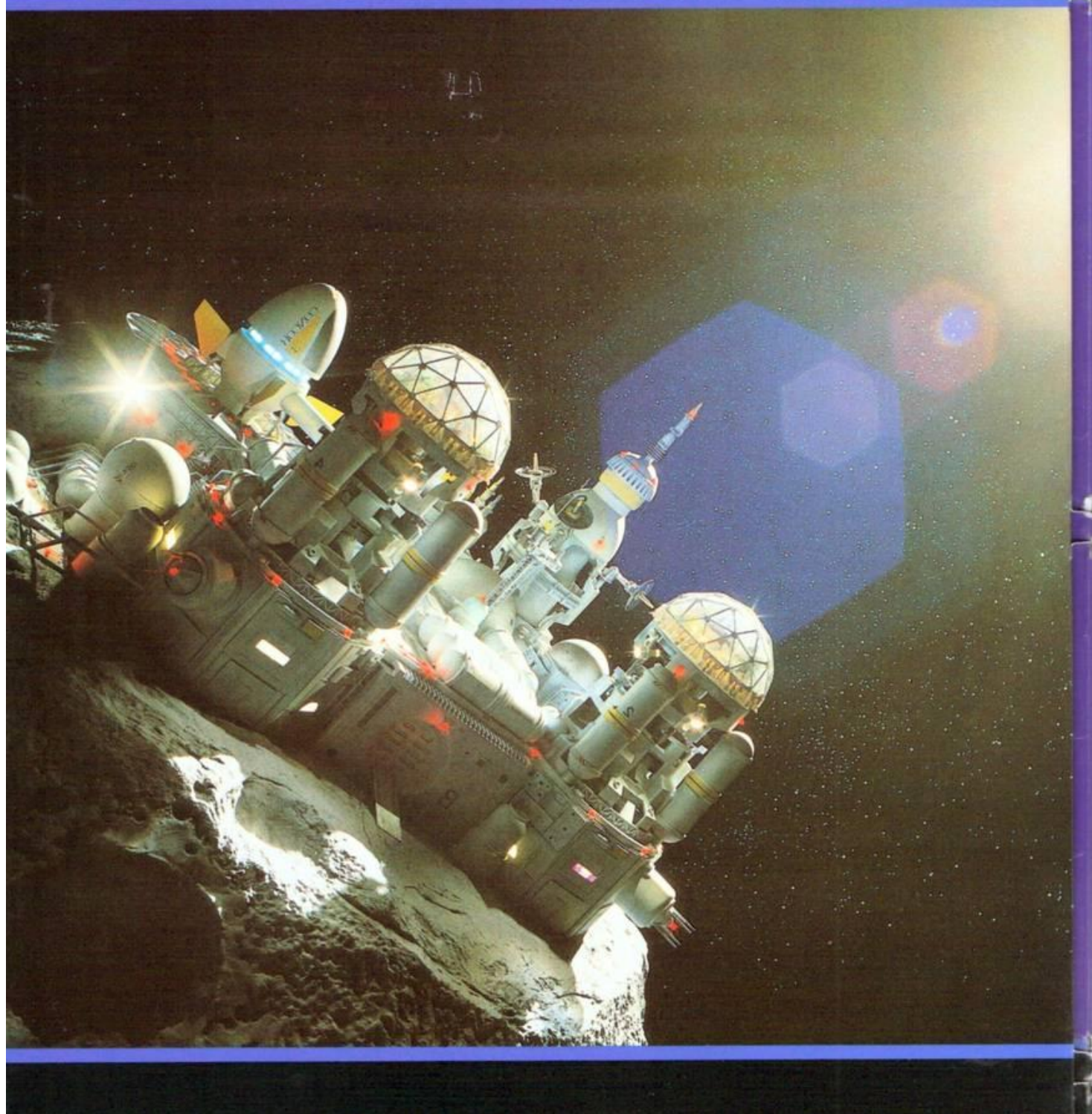


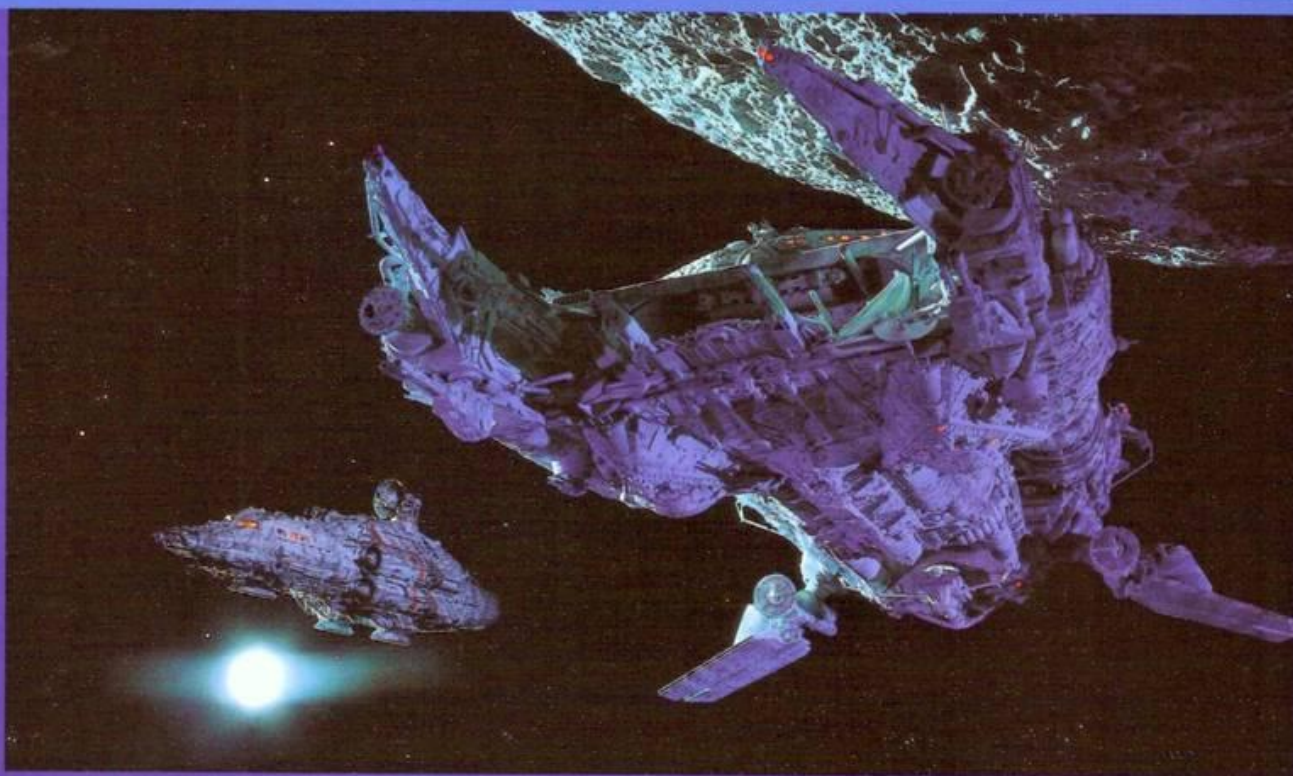


The moment has now arrived, all threads are being woven together, and ASTRO SAGA is going into production.

The model shop is in full swing. A veritable armada of various sizes are now ready to sweep the viewer into the absolutely endless universe of ASTRO SAGA. Panasensor has met the greatest challenge namely, building models on a scale never seen until now. The model for the GREAT THINKER space station alone will be 45 feet in diameter.

ASTRO SAGA – a dream comes true ...

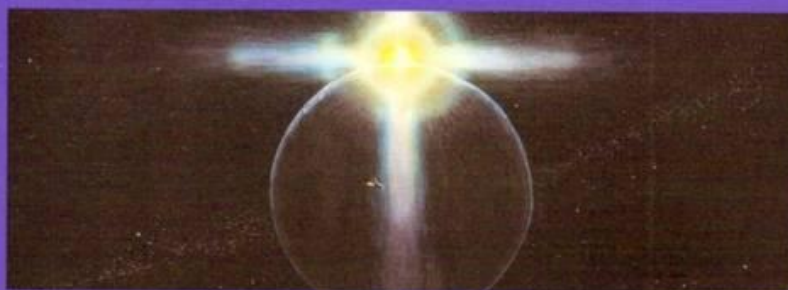




ASTRO SAGA ignites a firework of brilliant special effects, thanks to the use of state-of-the-art technology. Furthermore, its sweeping story will accompany mainstream viewers into the next millenium. It's family entertainment at its best.

Left: Test Moon 04, where the adventure begins ...

Above: Escape



ASTRO SAGA
the adventure continues ...